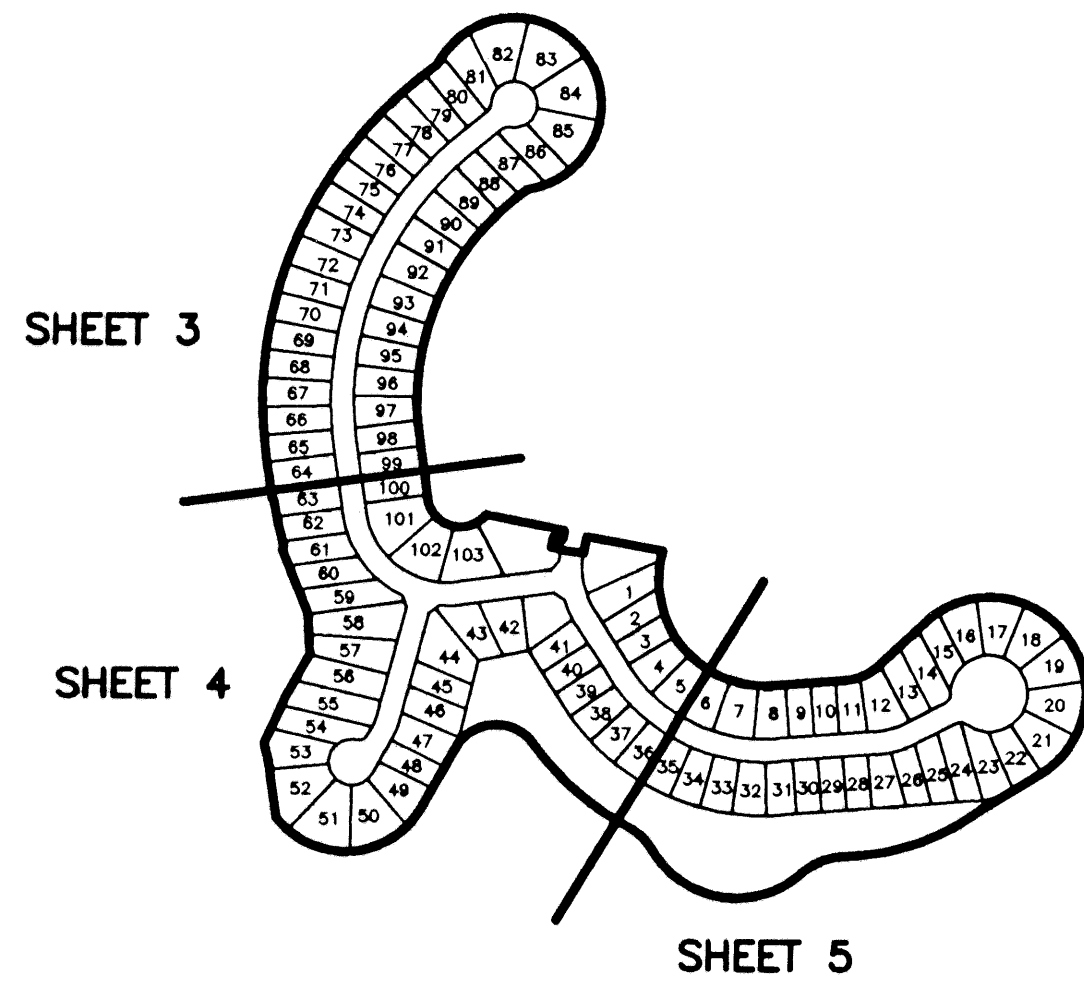


STATE OF FLORIDA
COUNTY OF PALM BEACH
THIS PLAT WAS FILED FOR
RECORD _____ DAY OF _____
AD, 1999 AND DULY RECORDED
IN PLAT BOOK _____ ON PAGES
_____ AND _____
DOROTHY H. WILKEN, CLERK
BY: _____, D.C.

CIRCUIT COURT SEAL

IRONHORSE PARCEL B-2

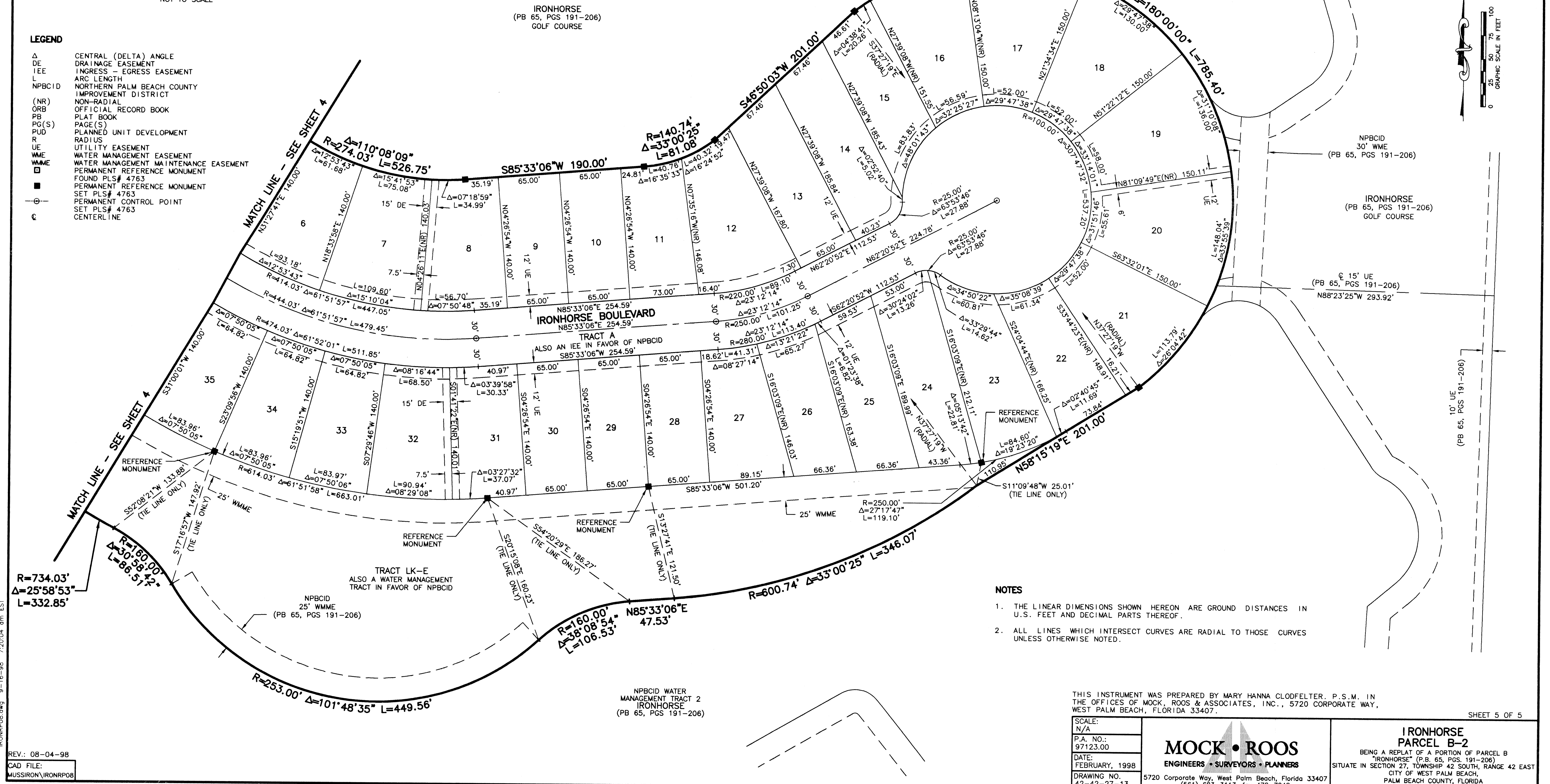
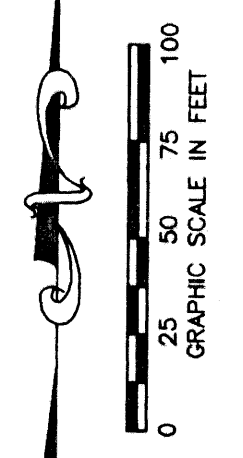
BEING A REPLAT OF A PORTION OF PARCEL B
"IRONHORSE" (P.B. 65, PGS. 191-206)
SITUATE IN SECTION 27, TOWNSHIP 42 SOUTH, RANGE 42 EAST
CITY OF WEST PALM BEACH,
PALM BEACH COUNTY, FLORIDA
MARCH, 1998 SHEET 5 OF 5



SHEET LOCATION MAP
NOT TO SCALE

LEGEND

- Δ CENTRAL (DELTA) ANGLE
- DE DRAINAGE EASEMENT
- IEE INGRESS - EGRESS EASEMENT
- L ARC LENGTH
- NPBCID NORTHERN PALM BEACH COUNTY IMPROVEMENT DISTRICT
- (NR) NON-RADIAL
- ORB OFFICIAL RECORD BOOK
- PB PLAT BOOK
- PG(S) PAGE(S)
- PUD PLANNED UNIT DEVELOPMENT
- R RADIUS
- UE UTILITY EASEMENT
- WME WATER MANAGEMENT EASEMENT
- WMME WATER MANAGEMENT MAINTENANCE EASEMENT
- PERMANENT REFERENCE MONUMENT FOUND PLS# 4763
- PERMANENT REFERENCE MONUMENT SET PLS# 4763
- PERMANENT CONTROL POINT SET PLS# 4763
- ⊂ CENTERLINE



NOTES

1. THE LINEAR DIMENSIONS SHOWN HEREON ARE GROUND DISTANCES IN U.S. FEET AND DECIMAL PARTS THEREOF.
2. ALL LINES WHICH INTERSECT CURVES ARE RADIAL TO THOSE CURVES UNLESS OTHERWISE NOTED.

THIS INSTRUMENT WAS PREPARED BY MARY HANNA CLODFELTER, P.S.M. IN THE OFFICES OF MOCK, ROOS & ASSOCIATES, INC., 5720 CORPORATE WAY, WEST PALM BEACH, FLORIDA 33407.

SCALE:	N/A
P.A. NO.:	97123.00
DATE:	FEBRUARY, 1998
DRAWING NO.:	42-42-27-13

MOCK • ROOS
ENGINEERS • SURVEYORS • PLANNERS

5720 Corporate Way, West Palm Beach, Florida 33407
(561) 683-3113, fax 478-7248

**IRONHORSE
PARCEL B-2**
BEING A REPLAT OF A PORTION OF PARCEL B
"IRONHORSE" (P.B. 65, PGS. 191-206)
SITUATE IN SECTION 27, TOWNSHIP 42 SOUTH, RANGE 42 EAST
CITY OF WEST PALM BEACH,
PALM BEACH COUNTY, FLORIDA

IRONP08.dwg 9-16-98 7:20:04 am EST

REV.: 08-04-98
CAD FILE:
MUSSIRON\IRONP08